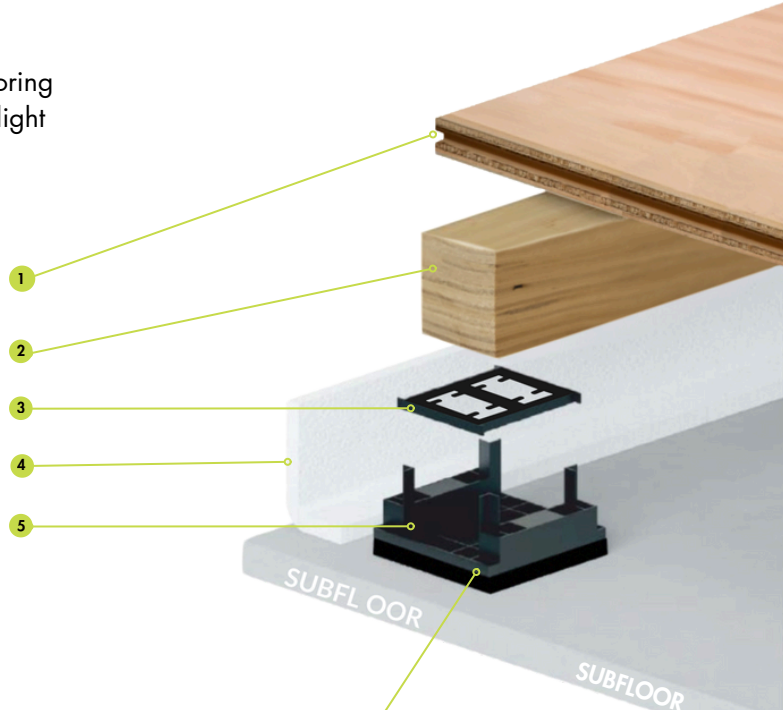


SILENT PLY

PRODUCT DESCRIPTION

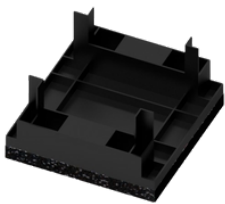
New Era T&G plywood is an engineered plywood flooring panel specifically designed for use in house building, light industrial and commercial applications.

- PLYWOOD
- NEW ERA LVL LAMINATED BATTEN
36MM OR 48MM
- PACKER
- PERIMETER FLANKING STRIP 10MM
- ACOUSTIC CRADLE



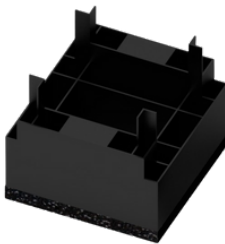
IMPROVED TEST RESULTS

The New Era acoustic cradle was tested at AIRO on the 27th April 2022 for impact sound insulation for compliance with Robust Details Ltd requirements as stipulated in the Robust Detail Handbook for FFT2 Resilient Cradle and batten system.



TEST 1

Ref L/3554/2 was with the 16/30mm cradles using a 36mm batten (average floor height 74-80mm) Result was **28db sound reduction**



TEST 2

Ref L/3554/3 was with 45/60mm cradle using a 46mm batten (average floor height 136-138mm) Result was **29db sound reduction**



NBS

