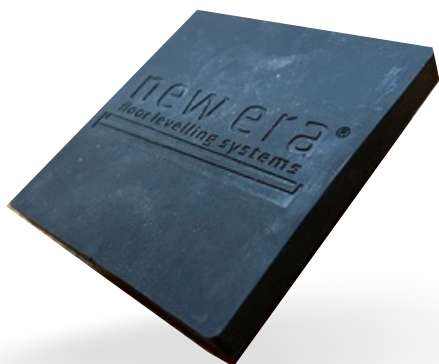


ACOUSTIC PAD DATA SHEET



PRODUCT IDENTIFIER

Product form	Granulate
Name	Beocycle TPE INJ546
Product code	98070005476
Application	Injection moulding
Composition	100% recycled material

PROCESSING CONDITIONS - GUIDELINES

DETAILS OF THE MATERIAL SHEET MANUFACTURER

New Era Ltd
Units 1, Southern Cross Trading Estate,,
2 and 3 Beeding Close, Bognor Regis
PO22 9TS

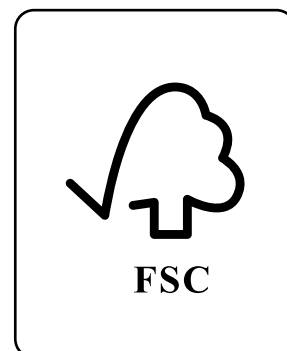
Hopper	40-60°C
Feeding zone	155-165°C
Compression zone	165-175°C
Metering zone	175-185°C
Nozzle	185-195°C
Mold temperature	30-55°C

PHYSICAL, MECHANICAL AND THERMAL PROPERTIES

Properties ⁽¹⁾		Method	Typical Value	Unit
Physical state			Solid	
Relative density		ISO 1183-1	0.88 - 0.98	g/cm ³
MFI		ISO 1133-1	5	
Coloured in mass	(190°C, 2, 16kg)		No	g/10min
Coloured material			Brown	
UV package			No	
Shore A			93	
Carbon footprint ⁽²⁾		PAS2050	730	
Shelf Life ⁽³⁾			6	kg CO ₂ Eq/ kg Months
Mechanical	(Unnotched 1eU, 23°C) (Notched 1eA, 23°C)			
Tensile modulus		ISO 527	104	MPa
Tensile strength		ISO 527	7, 9	%
Elongation at break		ISO 178	144	MPa
Flexural modulus		ISO 179	93, 4	kJ/m ²
Charpy impact strength		ISO 179	No break	kJ/m ²



LAMINATED BATTEN DATA SHEET



Product	Poplar Laminated Veneer Lumber
Length	22mm - 2400mm, 36mm & 48mm - 1800mm
Depth	22, 36 & 48mm
Width	45mm
Density	540kg/m ³
Moisture	8-10%
Emission	E1
Bending Strength	Up 60 N/mm ²
Tension Strength	25N/mm ²
Shear Strength	2.8N/mm ²
Modulus of Elasticity	Up 10000N/mm ²
Pallet Quantity	22mm 1125no 36mm 800no 48mm 560no

1800 x 45 x 36mm Poplar LVL E1 FSC certified (800)

1800 x 45 x 48mm Poplar LVL E1 FSC certified (560)

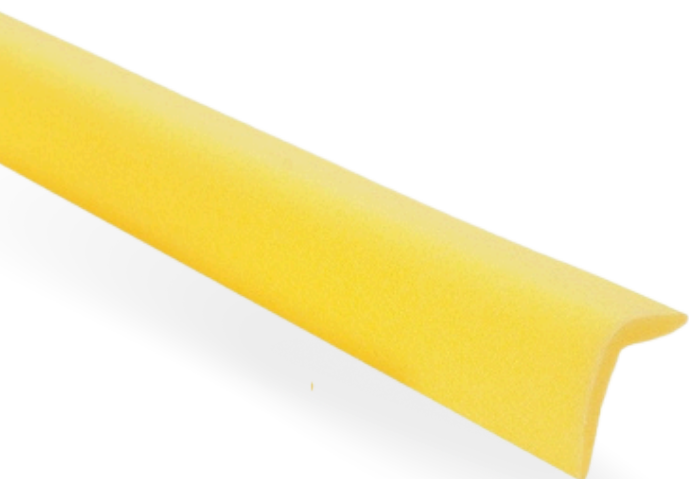
2400 x 45 x 22mm Poplar LVL E1 FSC certified (1125)



FLANKING STRIP

PRODUCT DESCRIPTION

Flexible polyethylene flanking strip to isolate acoustic treatment from wall structures, reducing flanking sound.



**PERIMETER
FLANKING STRIP**
10mm



TECHNICAL INFORMATION

Composition: Non-cross-linked, closed cell polyethylene

Application: Eliminate perimeter flanking transmission

Strip dimensions:

FS30: 6mm x 30mm x 30mm x 2m



QUIET PLANK ADHESIVE



PRODUCT DESCRIPTION

Multi-Purpose, Moisture Curing Polyurethane Joint Adhesive.

New Era Quiet Plank Adhesive is used to bond together Quiet Plank boards at the tongue and groove.

TECHNICAL INFORMATION

Brand Name	New Era Quiet Plank Adhesive
Bottle Size	1 Litre
Typical Coverage	33m ²
Curing Time	24 hours
Application	Bonding New Era, Quiet Plank & timber treatments T&G edges



PLYWOOD



PRODUCT DESCRIPTION

New Era T&G plywood is an engineered plywood flooring panel specifically designed for use in house building, light industrial and commercial applications.

Superior technical properties – strength and stability – add up to a sustainable, lightweight and easy to use panel that stands the test of time.

DIMENSIONS, PACKING & WEIGHTS

WISA-Sprucefloor 600 TG4	18 mm	22 mm
Nominal and laid size/measure	2400 x 600 mm	2400 x 600 mm
Edge profile	TG4	TG4
Weight per board (at 10 % m.c)	12 kg	15 kg
Boards per pack	100	82
Laid per pack	97.92 m2	80.64 m2
Volume per pack	2.6 m3	2.6 m3
Weight per pack	1220 kg	1280 kg
Sustainability Certifications	BREEAM Hea 9/Hea02 (VOC's).	CE marked EN636-2 S



MS500 ADHESIVE



PRODUCT DESCRIPTION

MS500 Wood Floor Adhesive from New Era is a high strength, single-part silane polymer adhesive. The advantages of MS500 is that it can be used for bonding most types of wood flooring - including wood blocks, engineered, laminated & solid wood plank flooring and the New Era Range of Acoustic Underlays. MS500 is also compatible with underfloor heating systems. It cannot be used over bitumen based subfloors.

This adhesive is compatible over most substrates including sand and cement screeds, concrete, Anhydrite (Calcium Sulphate) screeds, stone and timber. For compatibility confirmation with the underfloor heating systems contained within the substrate contact the Technical Team.

TECHNICAL INFORMATION

Coverage Rate:	Approx 1-1.3kg per m2 with 4mm or B6 triangular notch trowel.
Cleaning:	Can be removed by the use of multi purpose surface wipes whilst adhesive is still wet. Cured adhesive can be removed mechanically.
ShelfLife:	12 months when stored as recommended in original unopened packaging.
Packaging:	Available in 17kg/10 ltr plastic buckets.
Storage:	Store in dry conditions between +5°C and +25°C.
Colour:	Brown
Working Time:	20 mins approx. depending on atmospheric conditions.
Application Temperature Range:	+15°C to +35°C. R.H. Maximum 70%



HARDWOOD FLOORING ADHESIVE

PRODUCT DESCRIPTION

Hardwood Flooring Adhesive is a one-part PVA emulsion adhesive, specially formulated for wood bonding where a fast set, high bond strengths and excellent water resistance is required. The adhesive bonds virtually all woods, wood veneers, and mouldings and high-pressure decorative laminates (i.e. Formica). It is also suitable for use with a radio frequency press.

TECHNICAL INFORMATION

Base:	PVA emulsion adhesive
Consistency:	Medium viscosity
Viscosity @ 23°C:	115 ± 35 (Spindle 6, Speed 20).
Curing System:	Moisture Cure / RF Cure
Colour:	White, Clear when dried
Min. film forming temperature:	8-11°C
Solids content:	46 ± 1%
Specific gravity:	1.09
pH value:	2.5 – 3.5
Cleaning:	Equipment should be cleaned with warm or cold water while the adhesive is still wet.
Packaging:	500g / 1kg / 5kg / 25kg plastic container / 200kg metal drum / 1000kg plastic polybin.

SHELF LIFE

12 months in unopened packaging in a cool and dry storage place at temperatures between +5°C and +30°C.

PROTECT FROM FROST.

CHARACTERISTICS

- ✓ Fast setting.
- ✓ High bond strength.
- ✓ May be used with hot or cold presses.
- ✓ Easy to apply by brush, roller or serrated glue spreader.
- ✓ Conforms to British Standard BS 4071 in respect of bond strength and resistance to sustained load.
- ✓ Conforms to the water resistance requirements of British Standards BS EN204 to category D3.

APPLICATION

- Furniture assembly.
- Shop fitting / Bar fitting applications.
- Internal marine applications.
- General joinery applications.
- Window / Door frame construction.

LABELLING

No danger labelling required.



APPLICATION

Bonding conditions

The adhesive, substrate and ambient temperature should ideally be a minimum of 20°C. The moisture content of the wood materials should be uniform and should not exceed 12%.

Spreading

Hardwood Flooring Adhesive can be applied by serrated glue spreader, roller or brush. Application is normally to one surface only at a rate of 150g/m²

Open assembly times

Maximum 15 minutes depending on the materials to be bonded. Assembly times are dependant on ambient conditions and substrates used.

Pressing

Pressure must be applied whilst the adhesive is still wet and should be a minimum of 30psi (2kg/cm²) depending on type of wood and structure.

Press times

Press times required depend on adhesive coating and substrates. Typical figures are:

Hot press: Decorative laminate / plywood 70°C / 3-5 minutes

Cold press: Decorative laminate / plywood 20°C / 15-20 minutes

Pressure should be between 30 and 100 psi.

SHELF LIFE

Road:	ADR	Free
Maritime:	IMDG	Free
Air:	ICAO/IATA-DGR	Free
UN Number:	None	Does not apply

INFORMATION

Data contained in this document is for information only and is believed to be reliable. Trade Grade Products Ltd (TGP) cannot assume responsibility for results obtained by others over whose methods we have no control. It is the user's responsibility to determine suitability of the product for any specific purpose and TGP is pleased to provide a sample upon request.

Before using this product ensure that you have been supplied with and have read carefully the following information.

- The hazard label (complying with latest CDG/CPL regulations) applied to the container.
- Material Safety Data Sheet, Hardwood Flooring Adhesive.



PLYWOOD



PRODUCT DESCRIPTION

New Era T&G plywood is an engineered plywood flooring panel specifically designed for use in house building, light industrial and commercial applications.

Superior technical properties – strength and stability – add up to a sustainable, lightweight and easy to use panel that stands the test of time.

DIMENSIONS, PACKING & WEIGHTS

WISA-Sprucefloor 600 TG4	18 mm	22 mm
Nominal and laid size/measure	2400 x 600 mm	2400 x 600 mm
Edge profile	TG4	TG4
Weight per board (at 10 % m.c)	12 kg	15 kg
Boards per pack	100	82
Laid per pack	97.92 m2	80.64 m2
Volume per pack	2.6 m3	2.6 m3
Weight per pack	1220 kg	1280 kg
Sustainability Certifications	BREEAM Hea 9/Hea02 (VOC's).	CE marked EN636-2 S



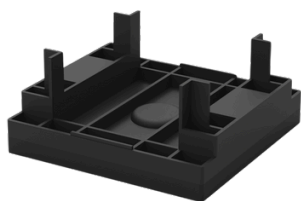
ACOUSTIC CRADLE

PRODUCT DESCRIPTION

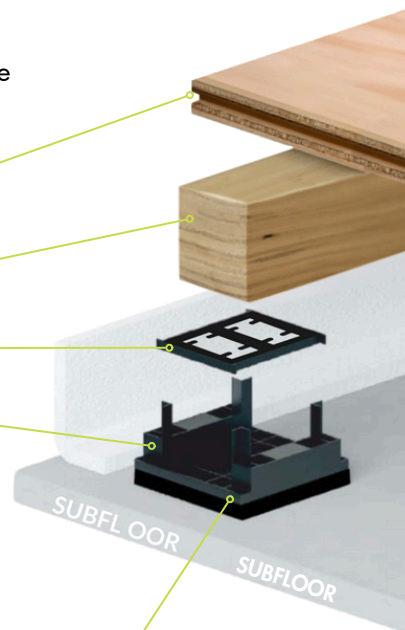
New Era Acoustic Cradles offer a high performance of impact sound isolation up to 28db reduction on sound transfer when used on upper floors, making this cradle perfect for new build or renovation projects.

The Unique New Era Rubber isolation pad will offer excellent loading to minimize vertical deflection, making it ideal for areas with a higher loading requirement.

The acoustic cradles have been extensively tested at the AIRO laboratory in compliance with Part E and Robust detail 'FFT2 Resilient cradle & batten system'

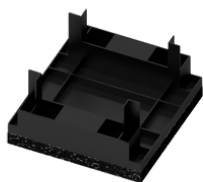


- FLOORING
- BATTEN
- PACKER
- ACOUSTIC CRADLE



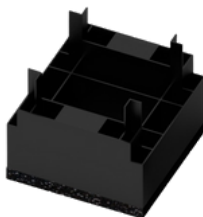
IMPROVED TEST RESULTS

The New Era acoustic cradle was tested at AIRO on the 27th April 2022 for impact sound insulation for compliance with Robust Details Ltd requirements as stipulated in the Robust Detail Handbook for FFT2 Resilient Cradle and batten system.



TEST 1

Ref L/3554/2 was with the 16/30mm cradles using a 36mm batten (average floor height 74-80mm) Result was **28db sound reduction**



TEST 2

Ref L/3554/3 was with 45/60mm cradle using a 46mm batten (average floor height 136-138mm) Result was **29db sound reduction**



ACOUSTIC UNDERLAY 3MM 15M2



PRODUCT DESCRIPTION

New Era 3mm Acoustic Underlay Is a high density re-bonded recycled rubber & cork crumb resilient underlay. It is our highly effective and most slimline resilient layer available for the reduction of impact noise in concrete constructions.

It's density gives minimal compression leaving you a long lasting and effective solution that can receive a wide range of floor finishes.

TECHNICAL INFORMATION

Dimensions	3mm x 1.0m x 15m
Roll Area	15 m2
Roll Weight	33.75 kg
Density	750 kg/m3
Mass	2.25 kg/m2

KEY FEATURES AND BENEFITS

- ✓ Significantly reduces impact sounds.
- ✓ Can be installed under finished flooring.
- ✓ Guaranteed constant thickness and density.
- ✓ Does not deform, maintains efficiency long term.
- ✓ Pre-fabricated recycled tire granule mat.
- ✓ Low compression under heavy loads.
- ✓ May be used in retro fit.



ACOUSTIC UNDERLAY 3MM 15M2

TESTED STRUCTURE:

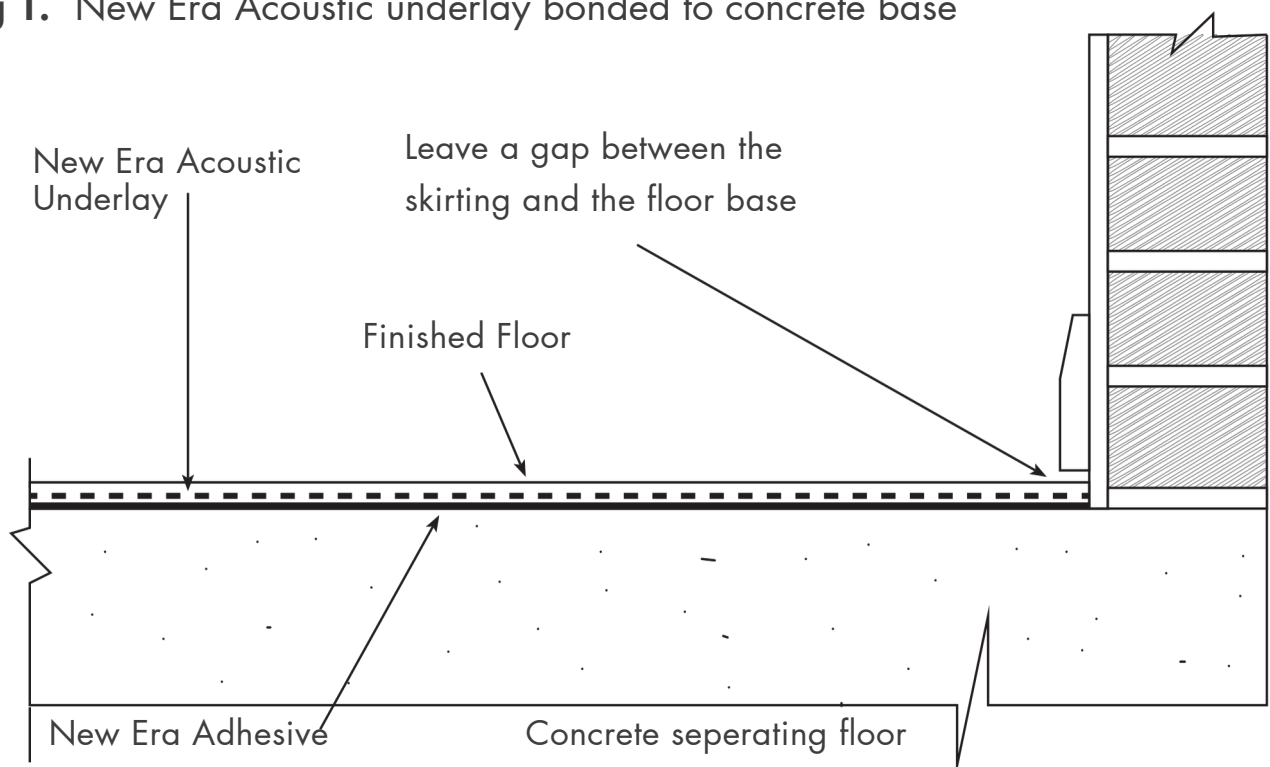
Tested and approved at the Sound research Laboratory in accordance with approved Document E Annex B procedure for sound testing. BS EN ISO 140-7:1998 BS EN ISO 140-8

ACOUSTIC PERFORMANCE:

Reduction from New Era 3mm Acoustic Underlay $\Delta L_{w21} \text{dB}$

Performance will vary with different floor make-up.

Fig 1. New Era Acoustic underlay bonded to concrete base



Section



ACOUSTIC UNDERLAY 5MM 10M2

TESTED STRUCTURE:

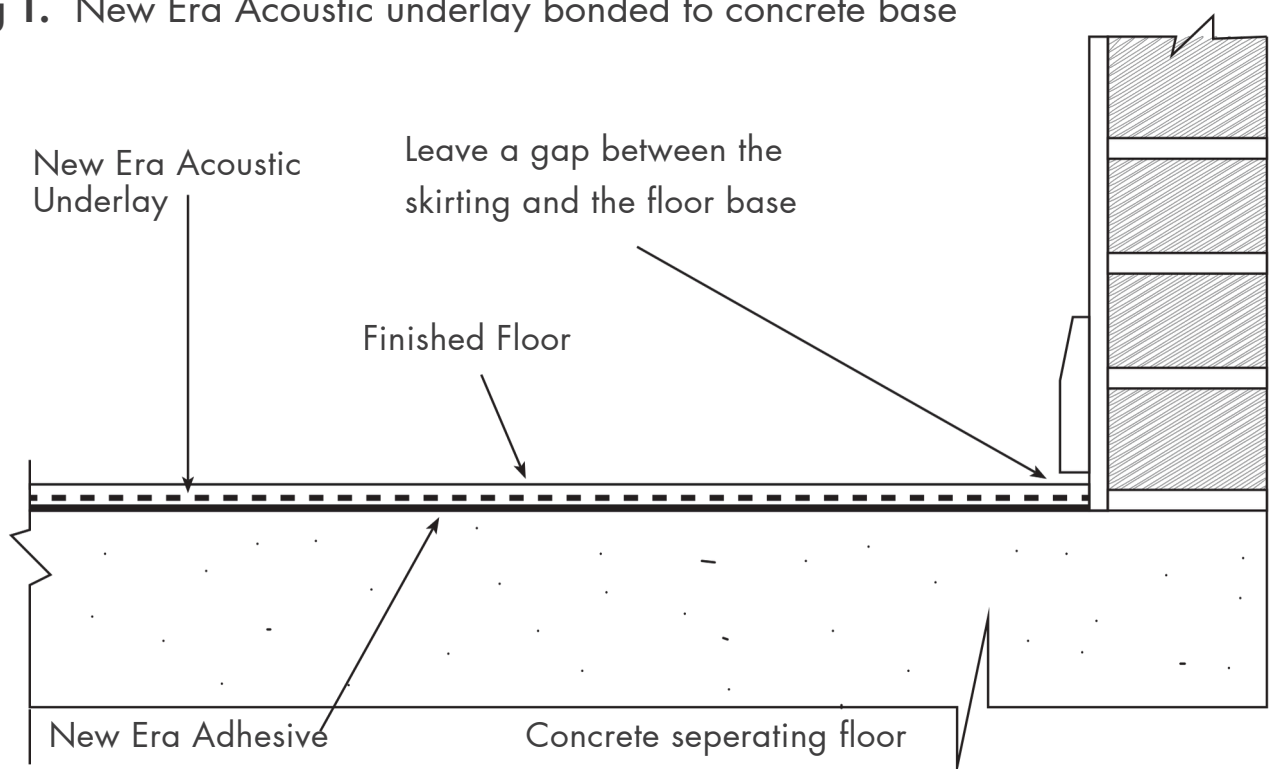
Tested and approved at the Sound research Laboratory in accordance with approved Document E Annex B procedure for sound testing. BS EN ISO 140-7:1998 BS EN ISO 140-8

ACOUSTIC PERFORMANCE:

Reduction from New Era 3mm Acoustic Underlay ΔL_w 23dB

Performance will vary with different floor make-up.

Fig 1. New Era Acoustic underlay bonded to concrete base



Section



ACOUSTIC UNDERLAY 5MM 10M2



PRODUCT DESCRIPTION

New Era 5mm Acoustic Underlay Is a high density re-bonded recycled rubber & cork crumb resilient underlay. It is our highly effective and most slimline resilient layer available for the reduction of impact noise in concrete constructions.

It's density gives minimal compression leaving you a long lasting and effective solution that can receive a wide range of floor finishes.

TECHNICAL INFORMATION

Dimensions	5mm x 1.0m x 10m
Roll Area	10 m ²
Roll Weight	37.5 kg
Density	750 kg/m ³
Mass	3.75 kg/m ²

KEY FEATURES AND BENEFITS

- ✓ Significantly reduces impact sounds.
- ✓ Can be installed under finished flooring.
- ✓ Guaranteed constant thickness and density.
- ✓ Does not deform, maintains efficiency long term.
- ✓ Pre-fabricated recycled tire granule mat.
- ✓ Low compression under heavy loads.
- ✓ May be used in retro fit.

