

INSTALLATION INSTRUCTIONS

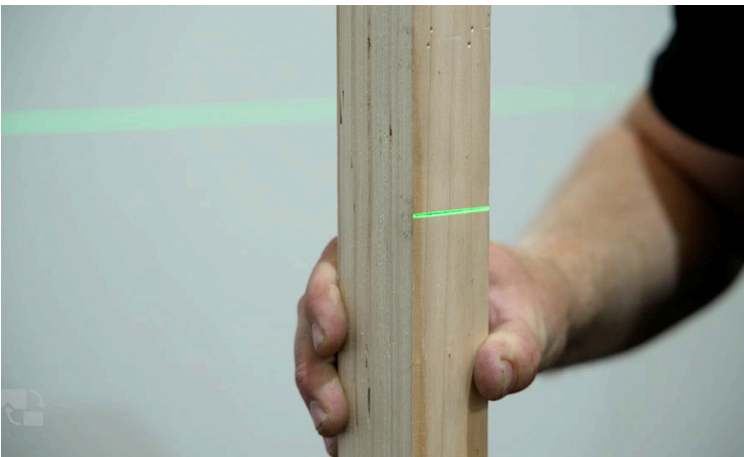


GYMFLEX ARENA **SOLID** INSTALLATION INSTRUCTIONS



1. Lay 1000 gauge polythene with 150mm overlapped and taped joints. Lap up wall passed finished floor height.

2. Flexjoist Centres to be set out at 411mm and cradles along the flexjoist set out at 450mm if using a 36mm flexjoist or 600mm if using a 48mm flexjoist



3. Sports cradles to be adjusted to datum using Laser level and New Era packers fitted to cradles.



WATCH INSTALLATION VIDEO

Note: On every installation the subfloor must be checked to ensure compliance with BS8201 and no system should be laid on concrete substrates unless RH is tested and recorded to be below 75% RH (65% if it has underfloor heating)

Building should be weathertight and Relative Humidity (RH) be stable and between 35-65%

GYMFLEX ARENA **SOLID** INSTALLATION INSTRUCTIONS



4. Fit Flexjoist to cradles, ensuring each row is staggered to make sure floor is fully tied in. Leave minimum of 40mm expansion off wall on ends of every Flexjoist.

5. Lay floor with header joints staggered at 822mm centres fully supported on a flexjoist. 0.8mm spacers to be fitted every 2 rows in main field of floor whilst laying. Floor to be nailed on every row and every flexjoist using L or T flooring nails. 1.5mm expansion required in the field of floor for every 1 metre of width - eg. (10m = 15mm)



WATCH INSTALLATION VIDEO

Note: On every installation the subfloor must be checked to ensure compliance with BS8201 and no system should be laid on concrete substrates unless RH is tested and recorded to be below 75% RH (65% if it has underfloor heating)

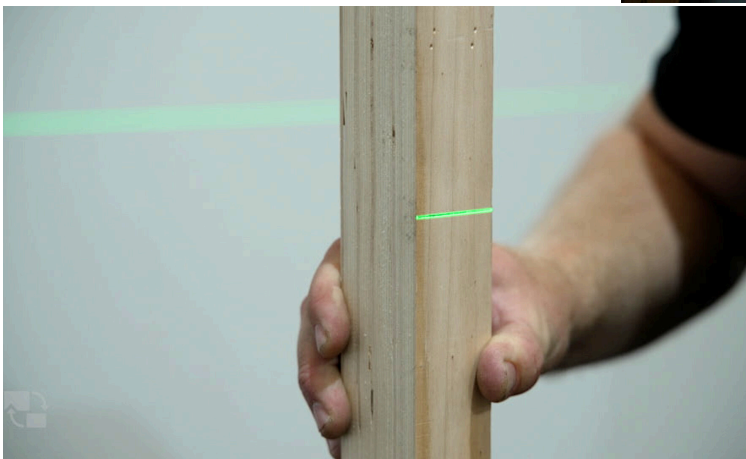
Building should be weathertight and Relative Humidity (RH) be stable and between 35-65%

GYMFLEX ARENA **LAYERED** INSTALLATION INSTRUCTIONS



1. Lay 1000 gauge polythene with 150mm overlapped and taped joints. Lap up wall passed finished floor height.

2. Flexjoist Centres to be set out at 440mm and cradles along the flexjoist at 450mm for 36mm flexjoist and 600mm for 48mm flexjoist



3. Sports cradles to be adjusted to datum using Laser level and New Era packers fitted to cradles.



WATCH INSTALLATION VIDEO

Note: On every installation the subfloor must be checked to ensure compliance with BS8201 and no system should be laid on concrete substrates unless RH is tested and recorded to be below 75% RH (65% if it has underfloor heating)

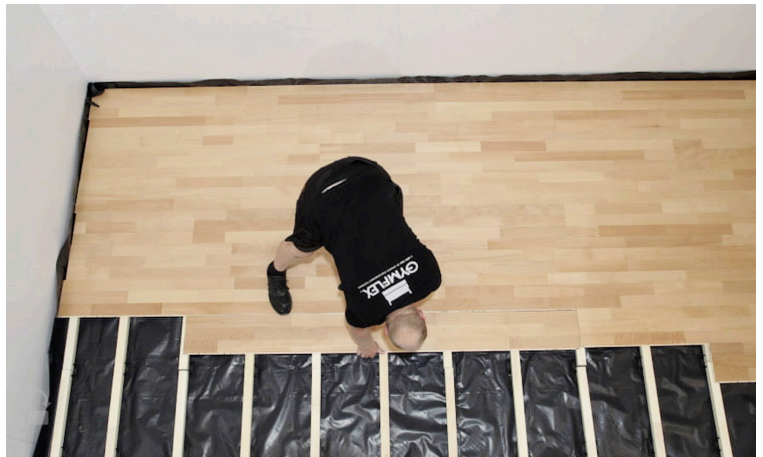
Building should be weathertight and Relative Humidity (RH) be stable and between 35-65%

GYMFLEX ARENA **LAYERED** INSTALLATION INSTRUCTIONS



4. Fit Flexjoist to cradles, ensuring each row is staggered to make sure floor is fully tied in. Leave minimum of 40mm expansion off wall on ends of every Flexjoist.

5. Lay floor with header joints staggered at 366mm centres with all ends glued using P300 adhesive and fully supported on a flexjoist. Floor to be nailed on every row and every flexjoist using L or T flooring nails. No expansion required in the field of floor and 15mm expansion to all abutments.

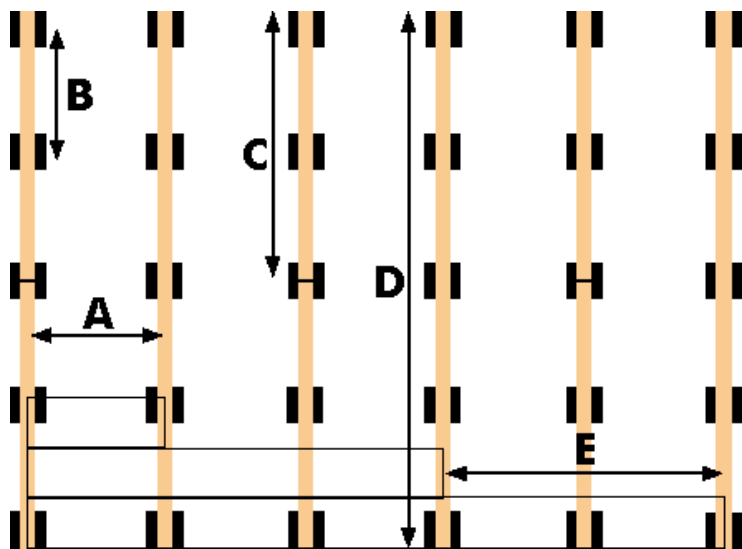


WATCH INSTALLATION VIDEO

Note: On every installation the subfloor must be checked to ensure compliance with BS8201 and no system should be laid on concrete substrates unless RH is tested and recorded to be below 75% RH (65% if it has underfloor heating)

Building should be weathertight and Relative Humidity (RH) be stable and between 35-65%

GYMFLEX ARENA



GYMFLEX ARENA FLEXJOIST & CRADLE LAYOUT

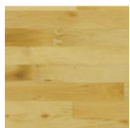
Solid Flooring

Flexjoist Size		A	B		C	D		E
36mm	Layout	Flexjoists 411mm	Cradles 450mm	Flexjoist Stagger >	Flexjoists 900mm	Flexjoists 1800mm	Floor Stagger >	Floor 822mm
48mm	>	Flexjoists 411mm	Cradles 600mm		Flexjoists 1200mm	Flexjoists 1800mm		Floor 822mm

Layered Flooring

Flexjoist Size		A	B		C	D		E
36mm	Layout	Flexjoists 440mm	Cradles 450mm	Flexjoist Stagger >	Flexjoists 900mm	Flexjoists 1800mm	Floor Stagger >	Floor 440mm
48mm	>	Flexjoists 440mm	Cradles 600mm		Flexjoists 1200mm	Flexjoists 1800mm		Floor 440mm

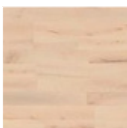
GYMFLEX ARENA SOLID FLOOR FINISH OPTIONS



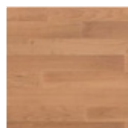
NATURAL



FUMED



MIST



FUMED MIST

GYMFLEX ARENA LAYERED FLOOR FINISH OPTIONS



OAK



BEECH