

☎ 03438 410115 ✉ sales@newerafloorsystems.co.uk

📍 Unit 1 2 & 3 Building NA | Beeding Close | Southern Cross Trading Estate | Bognor Regis | West Sussex | PO22 9TS

[www.newerafloorsystems.co.uk](http://www.newerafloorsystems.co.uk)



# UNEVEN SUB FLOORS? EASY...

**new era**  
floor levelling systems

As the name suggests NEW ERA provides a new standard in flooring levelling systems through progressive development and a complete understanding of problems inherent with uneven sub floors. NEW ERA achieves a practical, cost effective and versatile solution in overcoming inconsistencies in variable subfloor levels and conforms to all the latest standards for acoustics.

NEW ERA does not require a subfloor produced to high tolerances. When planning your installation remember NEW ERA can eliminate the need for a costly screed or power floated base.



New Era Cradles have been used successfully in the flooring industry for over 20 years

# WHY CHOOSE NEW ERA



practical



cost effective



versatile

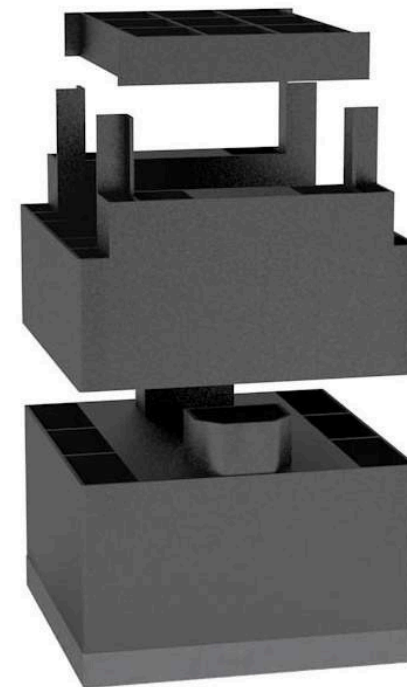


tested & approved



## > practical

- ✓ Manufactured in the UK using recycled plastic.
- ✓ Tested at AIRO Laboratory to the highest acoustic standard in conjunction with FFT2 detail.
- ✓ Designed for traditional batten floor construction for commercial, domestic and multiport's flooring.
- ✓ Resilient foam backed injection moulded modular flooring supports.
- ✓ New Era components are impervious to moisture and are extremely durable.
- ✓ New Era modules are available in a wide range of heights to cater for most level deviations.
- ✓ Pre-cut packers from 1.5mm to 12mm are readily available.
- ✓ New Era is simple and quick to install and easy to specify especially when supplied as a complete system.
- ✓ New Era is recognised by major flooring suppliers as being an effective problem solver in over coming uneven subfloor.



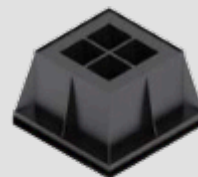
## > cost effective

- ✓ New Era does not require a subfloor produced to high tolerances. When planning your installation remember New Era can eliminate the need for a costly screed or power floated base.
- ✓ New Era levelling systems are dry installations with no base drying time to consider - few moisture problems and more cost effective.
- ✓ The accepted standard tolerance for a batten floor “base” is defined in BS 8204 Part 1 and is maximum level deviation of 3mm over 3 LM. Increases to this tolerance can affect both the floor and its warranty.
- ✓ New Era systems are often used to remedy level discrepancies where tolerances with a concrete base or screed have not been met. Unfortunately an unsuccessful base can sometimes leave insufficient floor depth for a remedial levelling system. If possible plan ahead...specify New Era from day one.
- ✓ New Era can be used with underfloor heating systems, fitted between the battens.

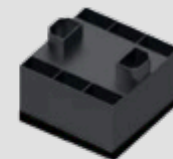


## > versatile

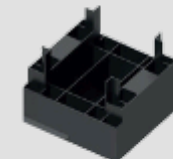
- ✓ New Era levelling systems offer far more than the ability to overcome average or out of tolerance level deviations.
- ✓ System construction heights range from 72mm to 433mm allowing for a wide range of services, under floor heating and insulation to be installed within the floor void.
- ✓ New Era can overcome large “step” level deviations and “wells” often found in the subfloors of old buildings.



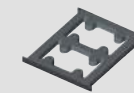
Height Extender  
(75mm)



Cradle Base  
(Multiple Options)



Cradle Top  
(Multiple Options)



Packers  
(1.5mm - 12mm)



*i* The 16/30 & 45/60 cradles are dual elevation to give a greater height range in each component, therefore making surveys & ordering very simple

- ✓ New Era levelling elements are available in three module types that cater for all aspects of floor levelling.
- ✓ The ability to support and level batten floor systems within this range makes New Era probably the most versatile levelling system available.

CONSTRUCTION HEIGHTS RANGE FROM  
**72MM TO 433MM**



## > tested & approved



New Era cradles have been used successfully in the flooring industry for over 20 years

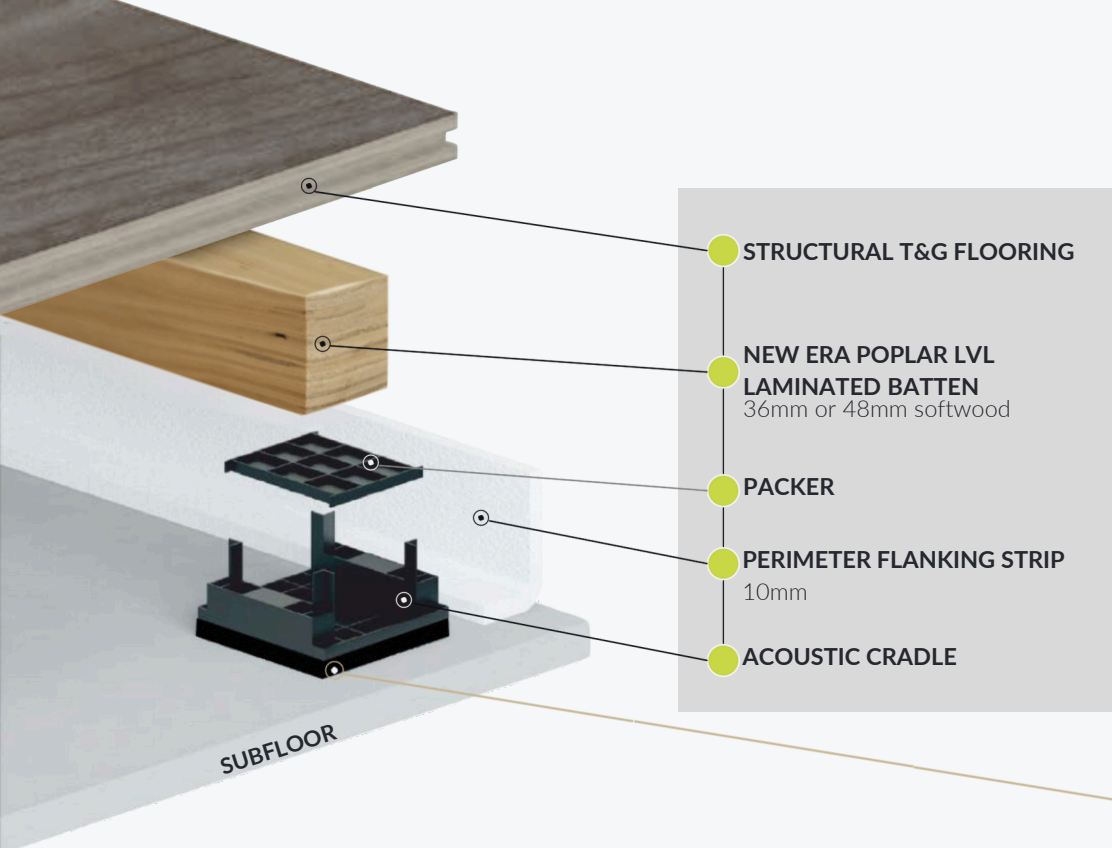


### acoustics



Fully tested to meet the requirements of the Document E regulations for impact sound reduction in accordance with the robust details for resilient cradle and batten systems.

# A **NEW ERA** IN SOUND REDUCTION CRADLES



OUR RECYCLED RUBBER ACOUSTIC PAD HAS BEEN TESTED AT THE AIRO LABORATORY FOR ACOUSTICS IN COMPLIANCE WITH THE ROBUST DETAIL LTD REQUIREMENTS FOR THE DOCUMENT E REGULATION.



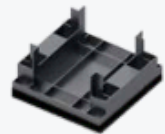
New Era Acoustic Cradles have been tested in compliance with Robust Details Limited requirements as stipulated in the Robust Detail Handbook for FFT2 Resilient Cradle and batten system.

The minimum performance for this specification is  $rd\Delta Lw = 17dB$ . New Era Acoustic Cradles achieved  $rd\Delta Lw = 28dB$  with the minimum build up.

Test data available for download on our website  
[www.newerafloorsystems.co.uk/technical](http://www.newerafloorsystems.co.uk/technical)

## IMPROVED TEST RESULTS

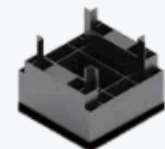
The New Era acoustic cradle was tested at AIRO on the 27th April 2022 for impact sound insulation for compliance with Robust Details Ltd requirements as stipulated in the Robust Detail Handbook for FFT2 Resilient Cradle and batten system.



### TEST 1

Ref L/3554/2 was with the 16/30mm cradles using a 36mm batten (average floor height 74-80mm) Result was **28db sound reduction**

-28 db

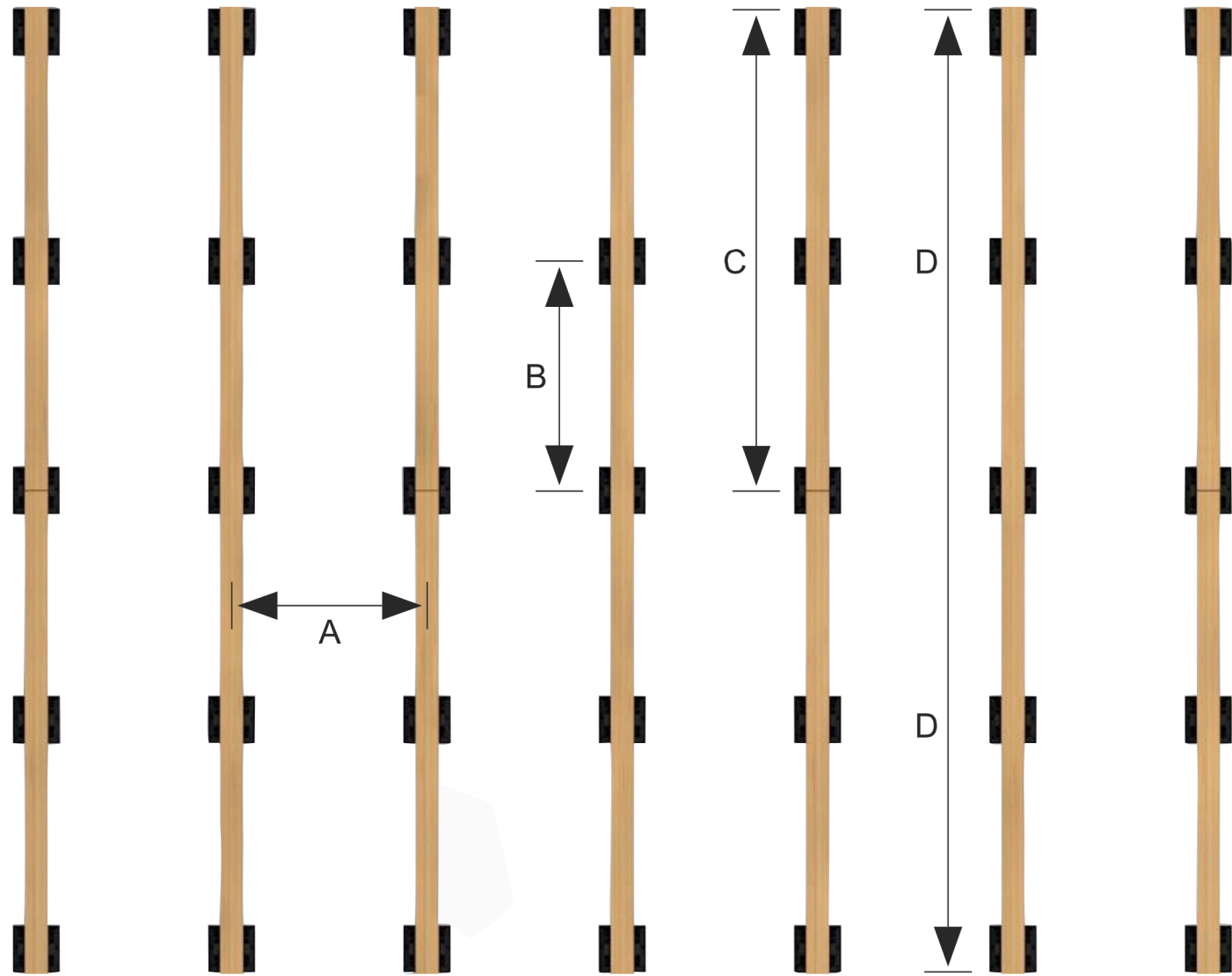


### TEST 2

Ref L/3554/3 was with 45/60mm cradle using a 46mm batten (average floor height 136-138mm) Result was **29db sound reduction**

-29 db





## > installation

The diagram on the left page illustrates the necessary requirements of setting out battens in staggered lengths which enhances the strength of the system.

Floor Type	Plywood 2400mm Quiet Plank 1200mm		Plywood 2400mm Quiet Plank 1200mm	
	Batten Centres	300mm	300mm	400mm
Batten Thickness	36mm	48mm	36mm	48mm
Cradle Centres	450mm	600mm	450mm	600mm
Cradles req'd / m2	8.75no	6.5no	6.6no	4.9no
LM Batten req'd / m2	3.6Lm	3.6Lm	2.7Lm	2.7Lm



A

B

Batten Stagger



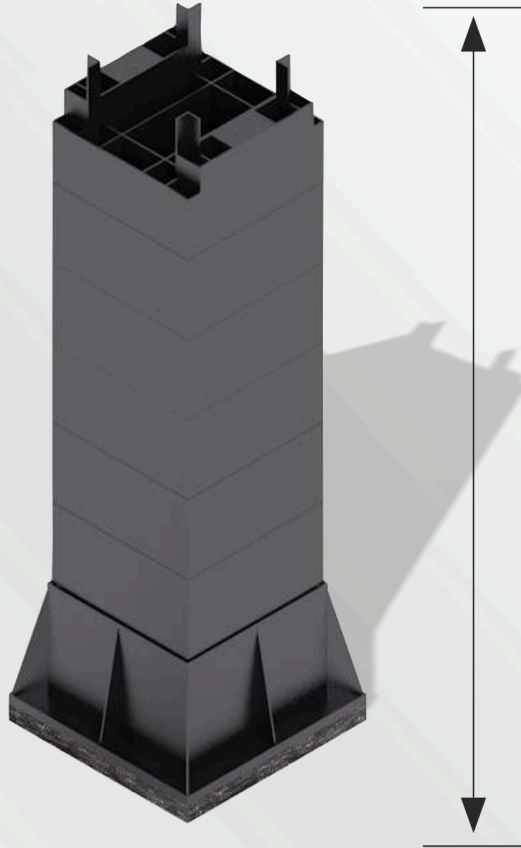
C

D





MAX 433mm



MIN 72mm

NEW ERA SYSTEMS

20mm Floor  
36mm Batten

20mm Floor  
48mm Batten

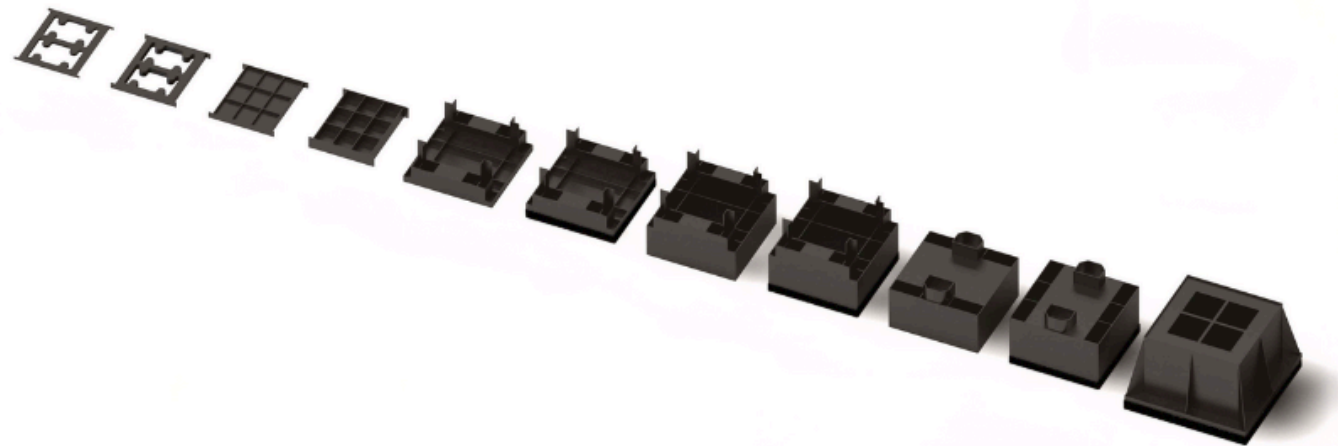
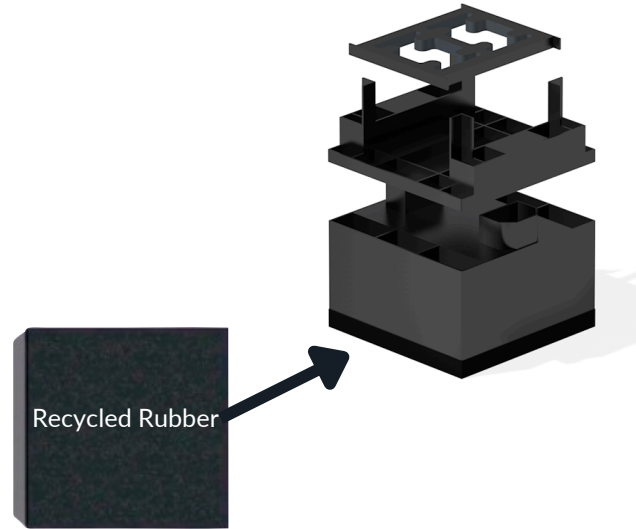
	Construction	Packing Height
Single Unit		
System 1	72-101mm	84 - 113mm
System 2	101-131mm	113 - 143mm
Multi 2 Unit		
System 3	117 - 146mm	129 - 158mm
System 4	146 - 176mm	158 - 188mm
Multi 3 Unit		
System 5	162-191mm	174 - 203mm
System 6	191-221mm	203 - 233mm
Multi 4 Unit		
System 7	207-236mm	219 - 248mm
System 8	236-266mm	248 - 278mm
Multi 5 Unit		
System 9	252-281mm	264 - 293mm
System 10	281-311mm	293 - 323mm
Multi 5 Unit Height Extender		
System 11	272-301mm	285 - 314mm
System 12	301-331mm	313 - 342mm
Multi 6 Unit Height Extender		
System 13	317-346mm	329 - 358mm
System 14	346-373mm	358 - 388mm
Multi 7 Unit Height Extender		
System 15	362-391mm	374 - 403mm
System 16	391-421mm	403 - 433mm



**Product Description**

New Era Acoustic cradles offer a high performance of impact sound insulation and will offer up to 28db reduction on sound transfer when used on upper floors, making this perfect for new build specifications or renovations.

The recycled rubber isolation pad will offer excellent loading and is ideal for all surfaces, whether free weights or general use. The acoustic cradles have been extensively tested at the AIRO laboratory in compliance with the Robust Detail Handbook, FFT2 Resilient Cradle and Batten system.



**Product Description**

New Era LVL laminated battens are unique and specially manufactured from Polar plywood to add to the performance of the cradle system.

Available for the sports range in 36,48 & 63mm thickness, the battens have no weaknesses from knots or imperfections and will not twist or warp in use.



Batten Size	Width	Length	Pallet Quantity
36mm	45mm	1800mm	800
48mm	45mm	1800mm	560
63mm	45mm	2100mm	420

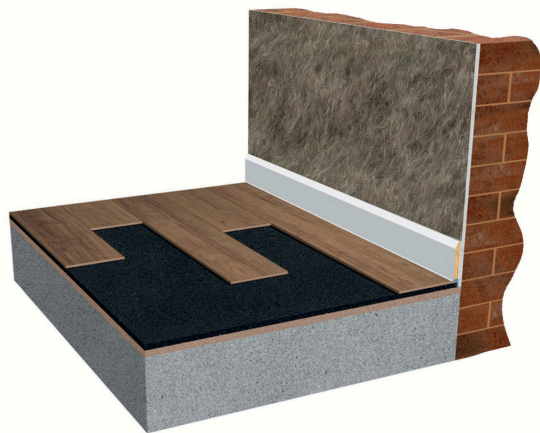
## NEW ERA 3MM & 5MM ACOUSTIC UNDERLAY

### Product Information

New Era Acoustic Underlay Is a high density re-bonded recycled rubber & cork crumb resilient underlay. It is our highly effective and most slimline resilient layer available for the reduction of impact noise in concrete constructions. It's density gives minimal compression leaving you a long lasting and effective solution that can receive a wide range of floor finishes.

### Product Benefits

- Significantly reduces impact sounds.
- Can be installed under finished flooring.
- Guaranteed constant thickness and density.
- Does not deform, maintains efficiency long term.
- Pre-fabricated recycled tire granule mat.
- Low compression under heavy loads.
- May be used in retro fit.



### Technical Information

#### 3mm Acoustic Underlay

Dimensions	3mm x 1.0m x
Roll Area	15m 15 m2
Roll Weight	33.75 kg
Density	750 kg/m3
Mass	2.25 kg/m2

#### 5mm Acoustic Underlay

Dimensions	5mm x 1.0m x
Roll Area	10m 10 m2
Roll Weight	37.5 kg
Density	750 kg/m3
Mass	3.75 kg/m2



## MS 500 ADHESIVE

### Product Description

MS500 Wood Floor Adhesive from New Era is a high-strength, single-part silane polymer adhesive. The advantage of MS500 is that it can be used for bonding most types of wood flooring including wood blocks, engineered, laminated & solid wood plank flooring and the New Era Range of Acoustic Underlays.

MS500 is also compatible with under-floor heating systems. It cannot be used over bitumen-based subfloors. This adhesive is compatible with most substrates including sand and cement screeds, concrete, Anhydrite (Calcium Sulphate) screeds, stone and timber.

For compatibility confirmation with the underfloor heating systems contained within the substrate contact the Technical Team.



Coverage Rate:	Approx 1-1.3kg per m2 with 4mm or B6 triangular notch trowel.
Packaging:	Available in 17kg/10 ltr plastic buckets.
Colour:	Brown.
Working Time:	20 mins approx. depending on atmospheric conditions.
Application Temperature Range:	+15°C to +35 °C. R.H. Maximum 70%

NEW ERA NEW ERA PLYWOOD

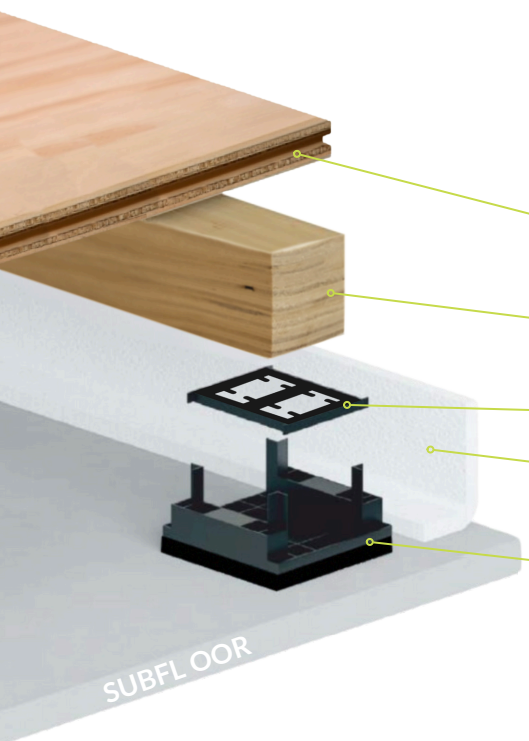
**PRODUCT DESCRIPTION**

New Era T&G plywood is an engineered plywood flooring panel specifically designed for use in house building, light industrial and commercial applications.



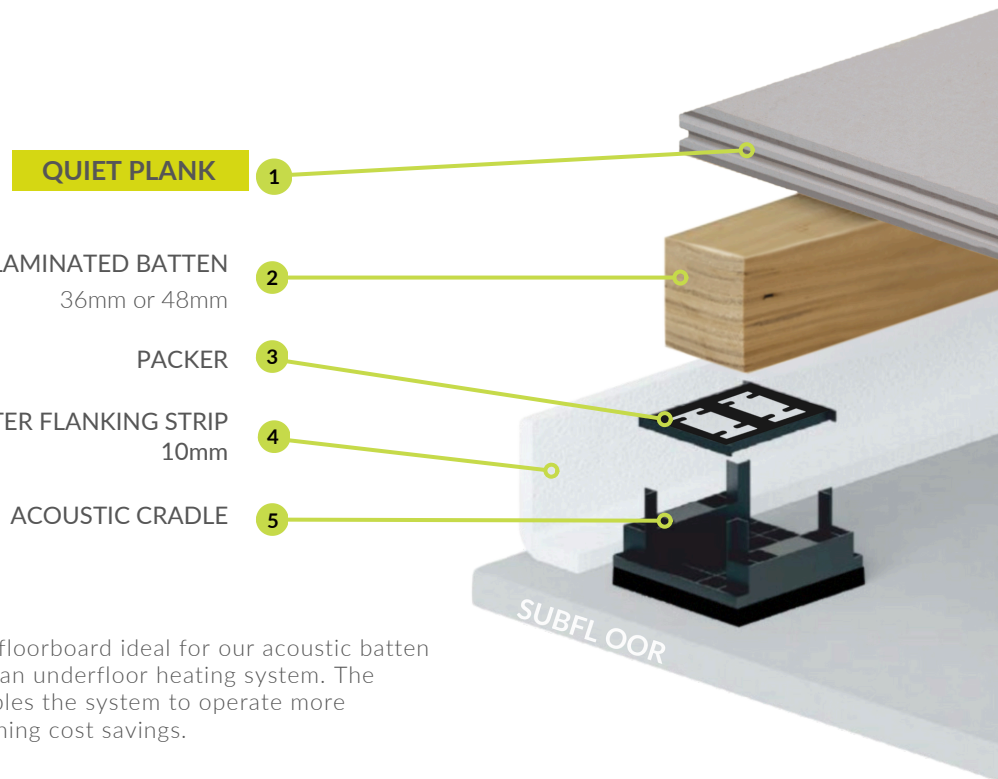
**DIMENSIONS, PACKING & WEIGHTS**

WISA-Sprucefloor 600 TG4	18 mm	22 mm
Nominal and laid size/measure	2400 x 600 mm	2400 x 600 mm
Edge profile	TG4	TG4
Weight per board (at 10 % m.c)	12 kg	15 kg
Boards per pack	100	82
Laid per pack	97.92 m2	80.64 m2
Volume per pack	2.6 m3	2.6 m3
Weight per pack	1220 kg	1280 kg
Sustainability Certifications	BREEAM Hea 9/Hea02 (VOC's).	CE marked EN636-2 S



- 1 PLYWOOD
- 2 NEW ERA LVL LAMINATED BATTEN  
36mm or 48mm
- 3 PACKER
- 4 PERIMETER FLANKING STRIP  
10mm
- 5 ACOUSTIC CRADLE

NEW ERA QUIET PLANK



- 1 QUIET PLANK
- 2 NEW ERA LVL LAMINATED BATTEN  
36mm or 48mm
- 3 PACKER
- 4 PERIMETER FLANKING STRIP  
10mm
- 5 ACOUSTIC CRADLE

**PRODUCT DESCRIPTION**

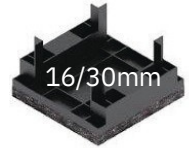
New Era Structural is a conductive floorboard ideal for our acoustic batten & cradle applications incorporating an underfloor heating system. The board's low thermal resistance enables the system to operate more efficiently, providing long-term running cost savings.



**Technical Information**

Brand Name	HiDECK Structural 25
Thickness	25mm
Thermal Resistance	0.0625m2K/W
Bearing Spacing (45mm wide)	400mm (max) centers
Board Dimensions	600mm x 1200mm
Weight	31.25kg/m2 22.5kg/board
Flanking/Edge Strips Required	YELOfon ES5/120

# SYSTEM BUILD UPS



16/30mm

S1



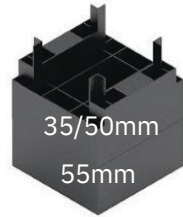
45/60mm

S2



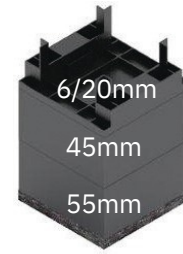
6/20mm  
55mm

S3



35/50mm  
55mm

S4



6/20mm  
45mm  
55mm

S5



35/50mm  
45mm  
55mm

S6



6/20mm  
45mm  
45mm  
55mm

S7



35/50mm  
45mm  
45mm  
55mm

S8



6/20mm  
45mm  
45mm  
45mm  
55mm

S9



35/50mm  
45mm  
45mm  
45mm  
55mm

S10



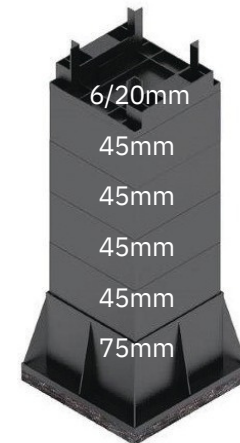
6/20mm  
45mm  
45mm  
45mm  
75mm

S11



35/50mm  
45mm  
45mm  
45mm  
75mm

S12



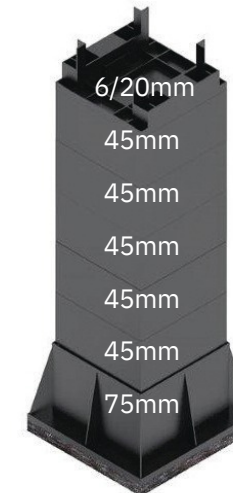
6/20mm  
45mm  
45mm  
45mm  
45mm  
75mm

S13



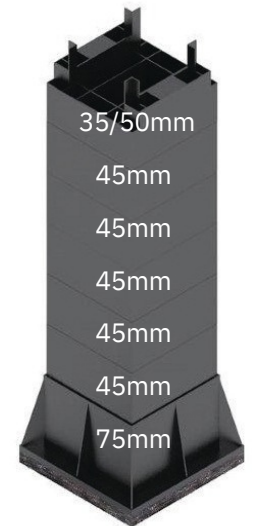
35/50mm  
45mm  
45mm  
45mm  
45mm  
75mm

S14



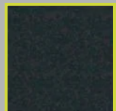
6/20mm  
45mm  
45mm  
45mm  
45mm  
75mm

S15



35/50mm  
45mm  
45mm  
45mm  
45mm  
75mm

S16

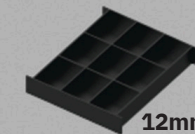


ACOUSTIC PAD

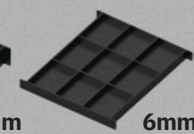


SPORTS PAD

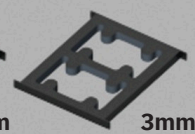
**DON'T FORGET YOUR PACKERS**



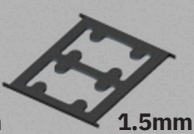
12mm



6mm



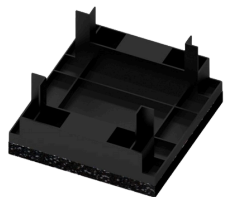
3mm



1.5mm

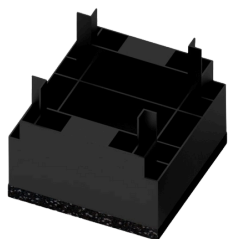
## IMPROVED TEST RESULTS

The New Era acoustic cradle was tested at AIRO on the 27th April 2022 for impact sound insulation for compliance with Robust Details Ltd requirements as stipulated in the Robust Detail Handbook for FFT2 Resilient Cradle and batten system.



### TEST 1

Ref L/3554/2 was with the 16/30mm cradles using a 36mm batten (average floor height 74-80mm) Result was **28db sound reduction**



### TEST 2

Ref L/3554/3 was with 45/60mm cradle using a 46mm batten (average floor height 136-138mm) Result was **29db sound reduction**



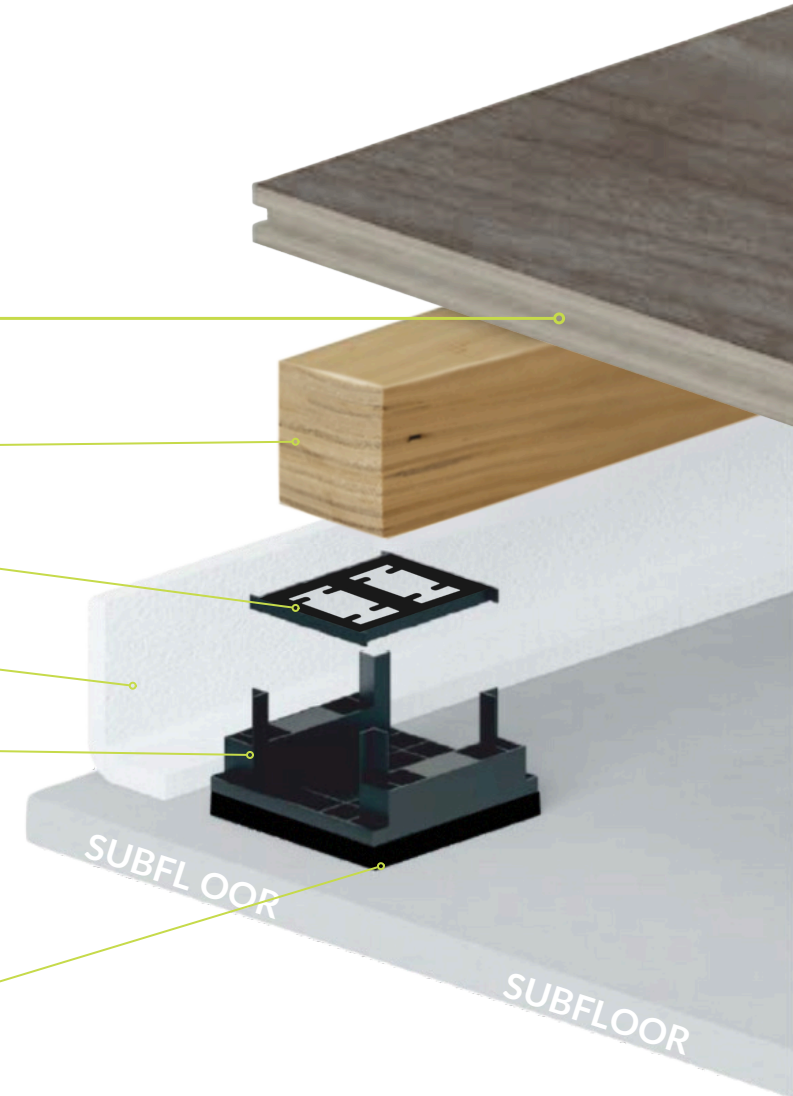
**T&G STRUCTURAL FLOORBOARD**  
Refer to manufacturer for compatibility

**NEW ERA LVL LAMINATED BATTEN**  
36mm or 48mm

**PACKER**

**PERIMETER FLANKING STRIP**  
10mm

**ACOUSTIC CRADLE**







**new era**  
floor levelling systems

 [newerafloorsystems.co.uk](http://newerafloorsystems.co.uk)



Director: J.Clews & P. Scott-Darling | VAT No. 643 2207 68 | Registered in England 2907150  
Registered office: Cawley Place | 15 Cawley Road | Chichester | West Sussex | PO19 1UZ